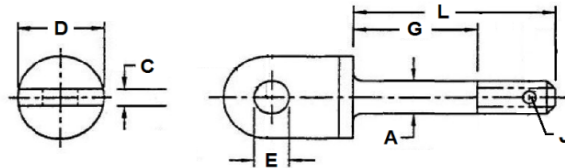


## BOLTS

### AN42 - AN43

#### EYE

MATERIAL - ALLOY STEEL, 4130 OR 8740  
 FINISH - CAD PLATE PER QQ-P-416, TYPE II, CLASS 2  
 HEAT TREAT PER MIL-H-6875  
 HARDNESS - HRC26-32

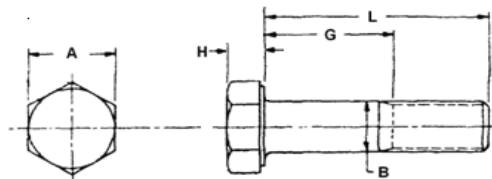


| <b>AN42</b>                |       |            |               | <b>AN43</b>                |       |            |               |
|----------------------------|-------|------------|---------------|----------------------------|-------|------------|---------------|
| A = .186 C = .094 J = .070 |       |            |               | A = .246 C = .125 J = .076 |       |            |               |
| HEAD DIA. 0.438            |       |            |               | HEAD DIA. 0.500            |       |            |               |
| THREAD 10-32 UNF-3A        |       |            |               | THREAD 1/4-28 UNF-3A       |       |            |               |
| TENSILE 1150 LBS. MIN      |       |            |               | TENSILE 2450 LBS. MIN      |       |            |               |
| SHEAR 4250 LBS. MIN        |       |            |               | SHEAR 7360 LBS. MIN        |       |            |               |
| G                          | L     | UN DRILLED | SHANK DRILLED | G                          | L     | UN DRILLED | SHANK DRILLED |
| GRIP                       | LGTH  | DASH#      | DASH#         | GRIP                       | LGTH  | DASH#      | DASH#         |
| 0.125                      | 0.531 | 4A         | 4             | 0.063                      | 0.531 | 4A         | 4             |
| 0.250                      | 0.656 | 5A         | 5             | 0.188                      | 0.656 | 5A         | 5             |
| 0.375                      | 0.781 | 6A         | 6             | 0.313                      | 0.781 | 6A         | 6             |
| 0.500                      | 0.906 | 7A         | 7             | 0.438                      | 0.906 | 7A         | 7             |
| 0.625                      | 1.031 | 10A        | 10            | 0.563                      | 1.031 | 10A        | 10            |
| 0.750                      | 1.156 | 11A        | 11            | 0.688                      | 1.156 | 11A        | 11            |
| 0.875                      | 1.281 | 12A        | 12            | 0.813                      | 1.281 | 12A        | 12            |
| 1.000                      | 1.406 | 13A        | 13            | 0.938                      | 1.406 | 13A        | 13            |
| 1.125                      | 1.531 | 14A        | 14            | 1.063                      | 1.531 | 14A        | 14            |
| 1.250                      | 1.656 | 15A        | 15            | 1.188                      | 1.656 | 15A        | 15            |
| 1.375                      | 1.781 | 16A        | 16            | 1.313                      | 1.781 | 16A        | 16            |
| 1.500                      | 1.906 | 17A        | 17            | 1.438                      | 1.906 | 17A        | 17            |
| 1.625                      | 2.031 | 20A        | 20            | 1.563                      | 2.031 | 20A        | 20            |
| 1.750                      | 2.156 | 21A        | 21            | 1.688                      | 2.156 | 21A        | 21            |
| 1.875                      | 2.281 | 22A        | 22            | 1.813                      | 2.281 | 22A        | 22            |
| 2.000                      | 2.406 | -          | -             | 1.938                      | 2.406 | 23A        | 23            |
| 2.125                      | 2.531 | -          | -             | 2.063                      | 2.531 | 24A        | 24            |

### MS9489

#### HEX HEAD

MATERIAL - A-286 CRES. PER AMS 5731  
 FINISH - PASSIVATE  
 TENSILE - 2600 PSI MIN



| <b>MS9489</b>      |        |       |
|--------------------|--------|-------|
| THREAD             | 1032   |       |
| B DIM              | 0.1875 |       |
| A DIM              | 0.3750 |       |
| H DIM              | 0.1250 |       |
| TENSILE - LBS. MIN | 2210   |       |
| SHEAR - LBS. MIN   | 2125   |       |
| G                  | L      | DASH# |
| GRIP               | LENGTH |       |
| 0.082              | 0.375  | 04    |
|                    | 0.438  | 05    |
|                    | 0.500  | 06    |
|                    | 0.563  | 07    |
|                    | 0.625  | 08    |
|                    | 0.688  | 09    |