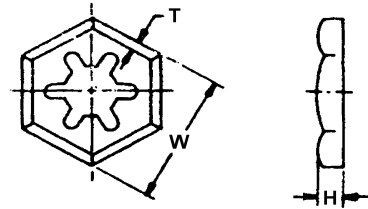


PAL & AXLE NUTS

RM / RF

PALNUT - STAMPED

MATERIAL - SPRING STEEL, 1050-66
FINISH - MECHANICAL ZINC

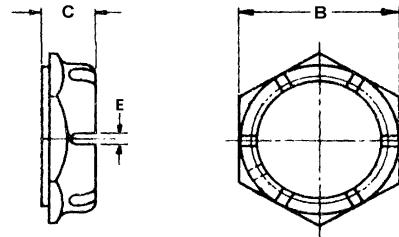


PART NUMBER	THREAD SIZE	H	T	W
RM103200SOG	10-32	0.105	0.013	0.369
RF142800SOG	1/4-28	0.118	0.016	0.433
RF516240SOG	5/16-24	0.129	0.019	0.495
RF382400SOG	3/8-24	0.140	0.019	0.557
RL716200SOG	7/16-20	0.150	0.020	0.625
RF 122000SOG	1/2-20	0.172	0.026	0.750

MS21025

AXLE NUT - CASTELLATED

MATERIAL - ALLOY STEEL
FINISH - CADMIUM PER QQ-P-416



DASH #	THREAD SIZE	B	C	E
16	1-16	1.250	0.500	0.156
20	1-1/4-20	1.500	0.562	
24	1-1/2-16	1.750	0.562	