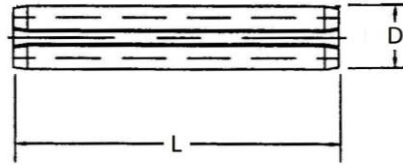


## SPRING PINS

**MS16562**  
SLOTTED

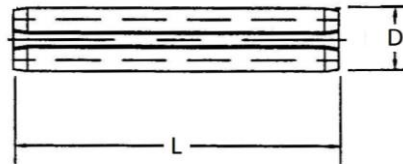


MATERIAL - CARBON STEEL 1070 THRU 1095 PER NASM10971  
FINISH - CADMIUM PER AMS-QQ-P-416 TYPE II CL .2



DIAMETER	0.063	0.094	0.125
DOUBLE SHEAR LBS/ MIN	425	1000	2100
LENGTH	DASH #	DASH #	DASH #
0.250	2	21	-
0.313	3	22	-
0.375	4	23	31
0.438	5	24	-
0.500	6	25	33
0.563	7	26	-
0.625	-	-	35
0.750	-	-	36
0.875	-	-	37
1.000	-	-	38

**MS16562**  
SLOTTED



MATERIAL: CRES PER AMS 5506  
FINISH: PASSIVATE PER AMS 2700



DIAMETER	0.063	0.078	0.094	0.125
DOUBLE SHEAR LBS/ MIN	300	460	720	1500
LENGTH	DASH #	DASH #	DASH #	DASH #
0.188	189	-	-	-
0.250	190	199	209	-
0.313	191	200	210	-
0.375	192	201	211	219
0.438	193	202	212	220
0.500	194	203	213	221
0.563	195	-	214	-
0.625	196	205	215	223
0.750	198	206	216	224
0.875	-	-	-	225
1.000	-	208	218	226
1.250	-	-	-	227